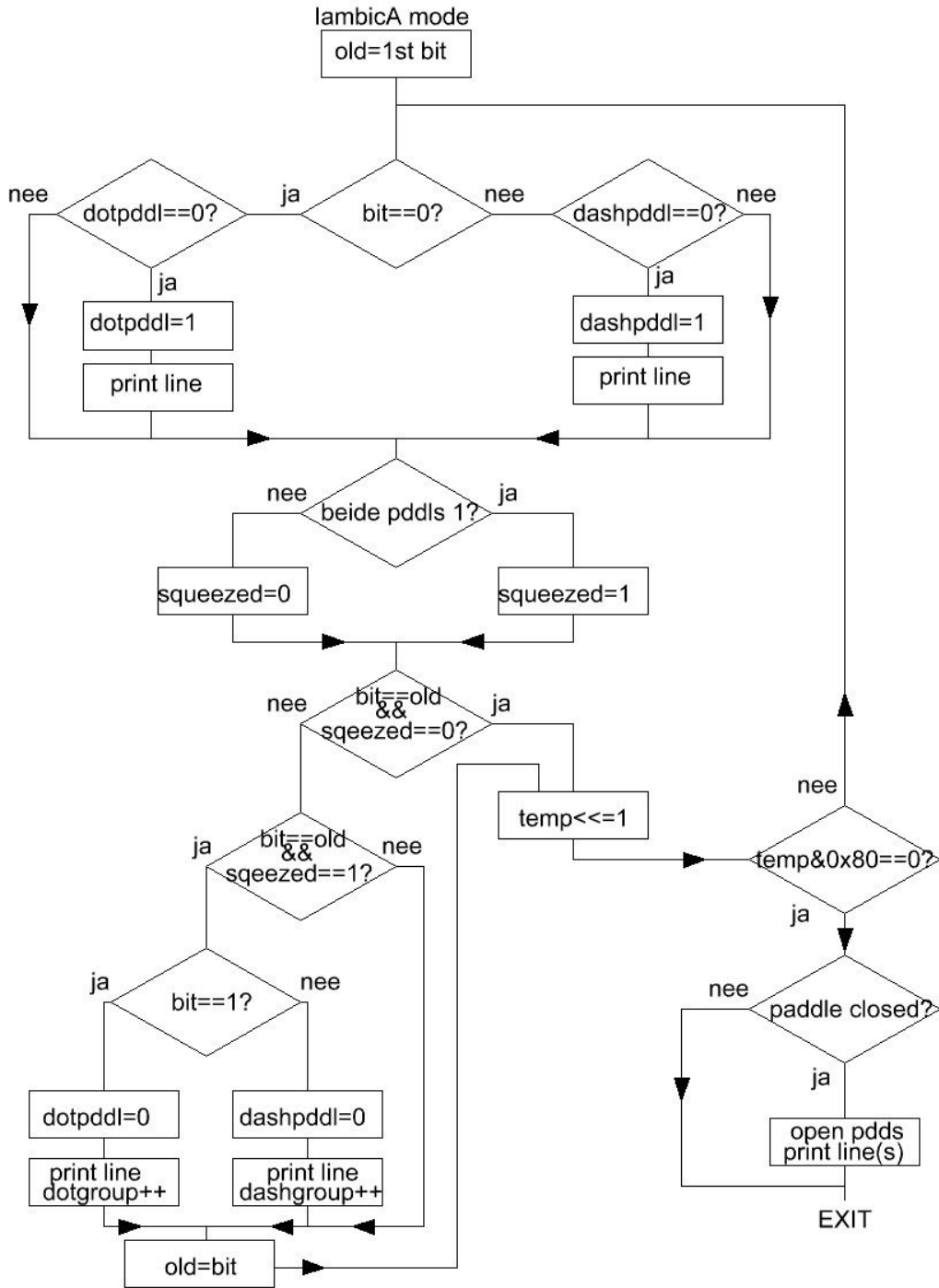
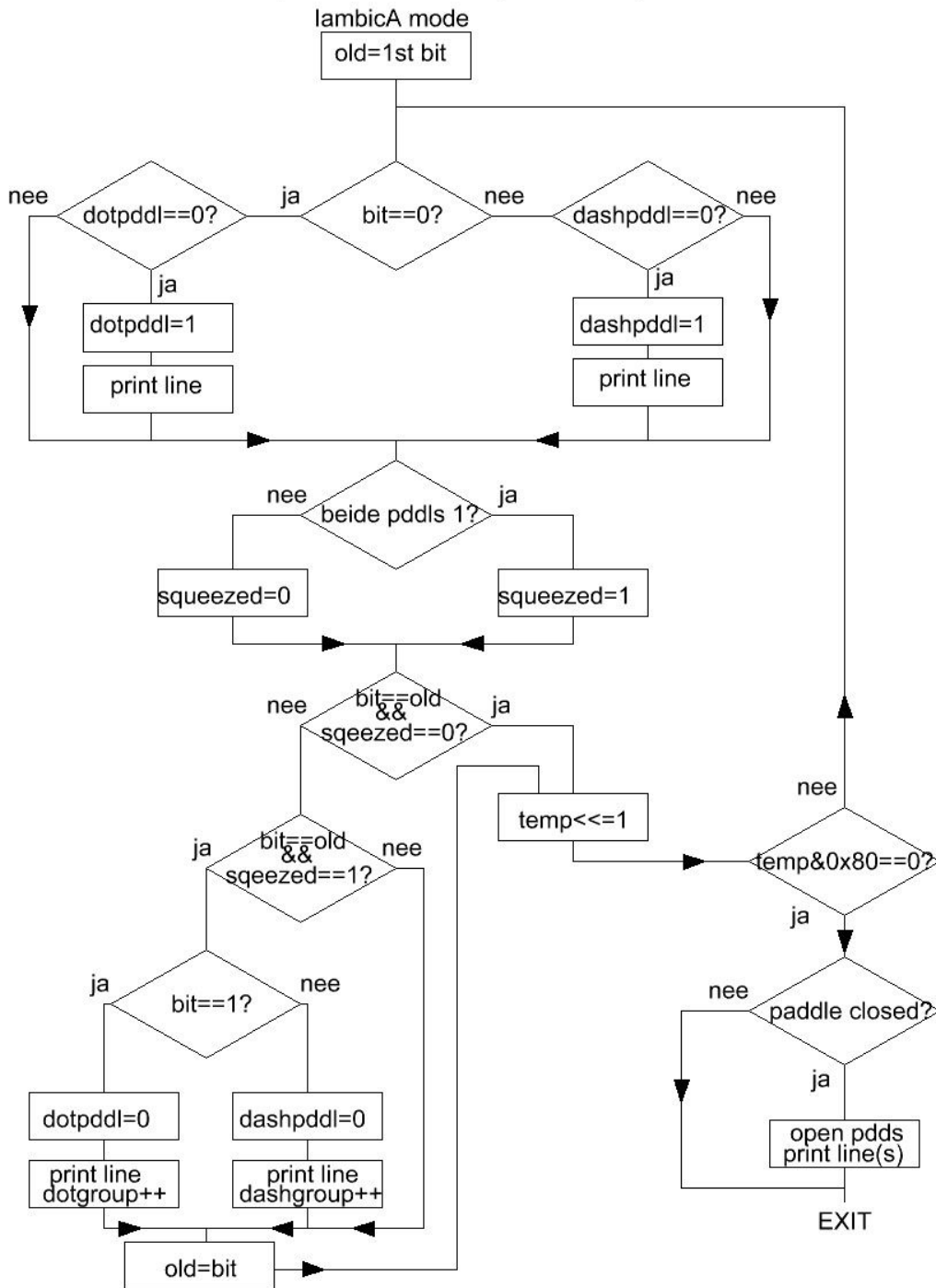


routine die dotopen/close en dash open/close bepaalt in C



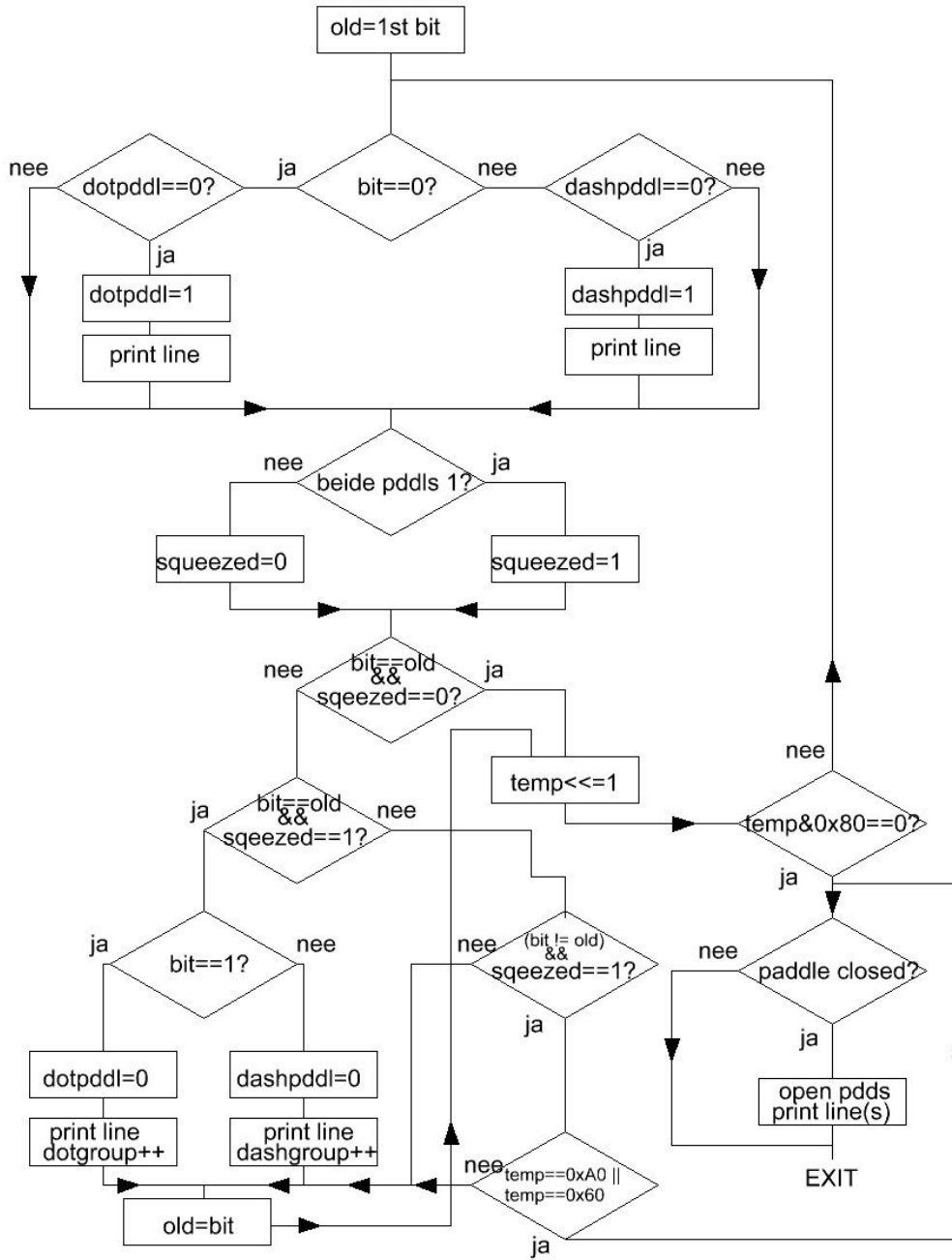
Reedriver

routine die dotopen/close en dash open/close bepaalt in C



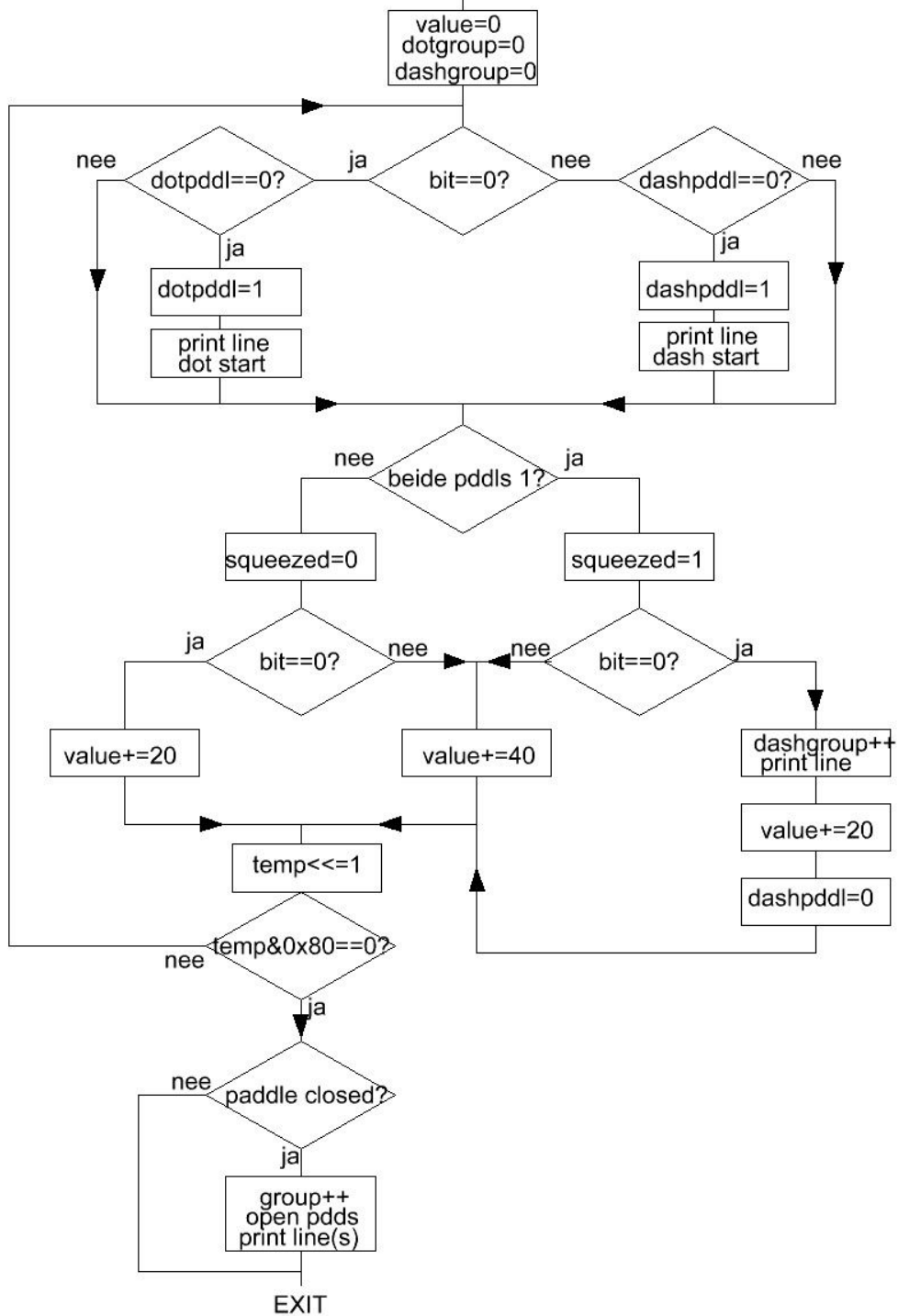
Iambic A mode

routine die dotopen/close en dash open/close bepaalt in C
lambicB mode



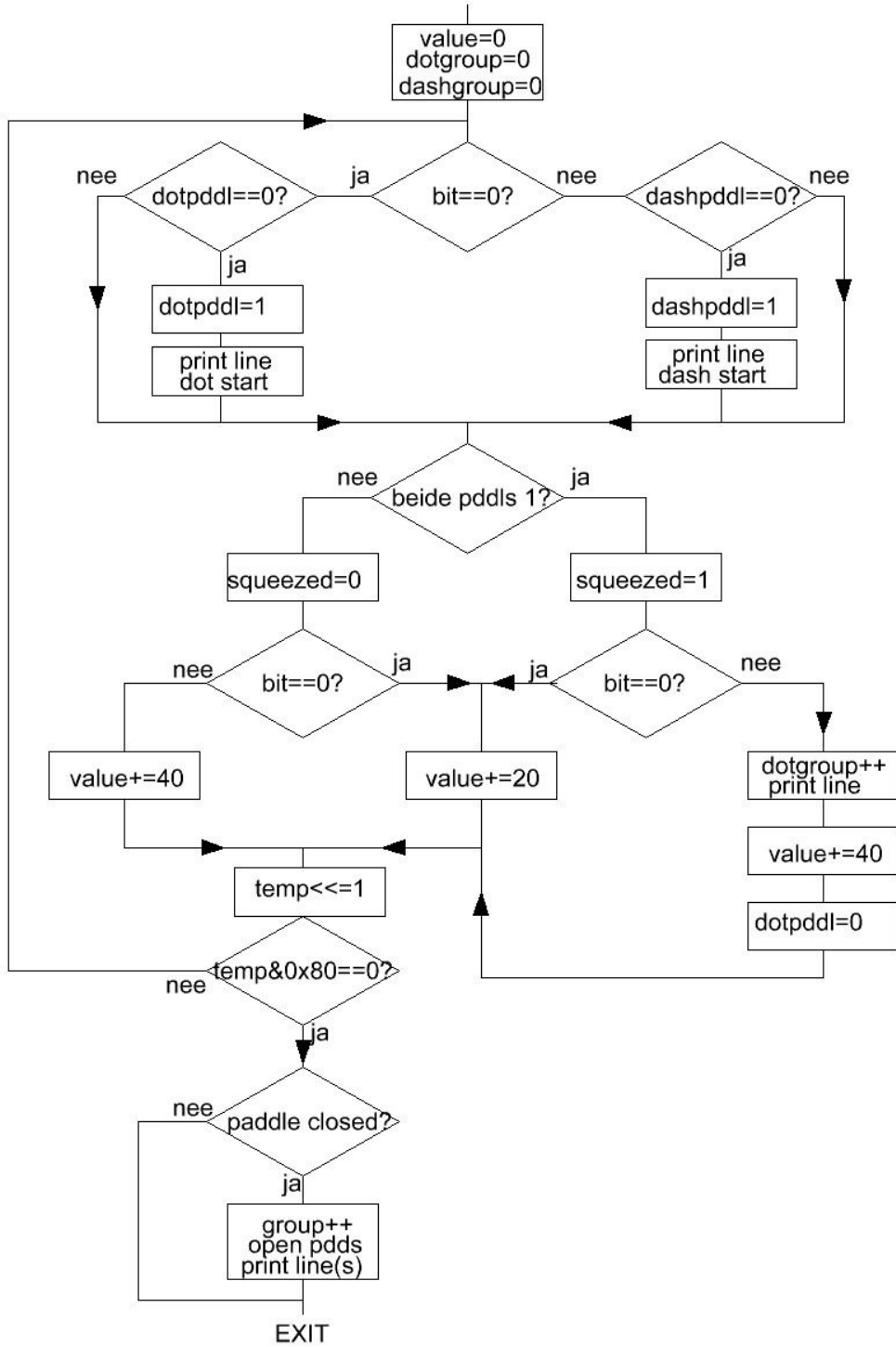
Iambic B mode

routine die dotopen/close en dash open/close bepaalt in C
Dash priority mode



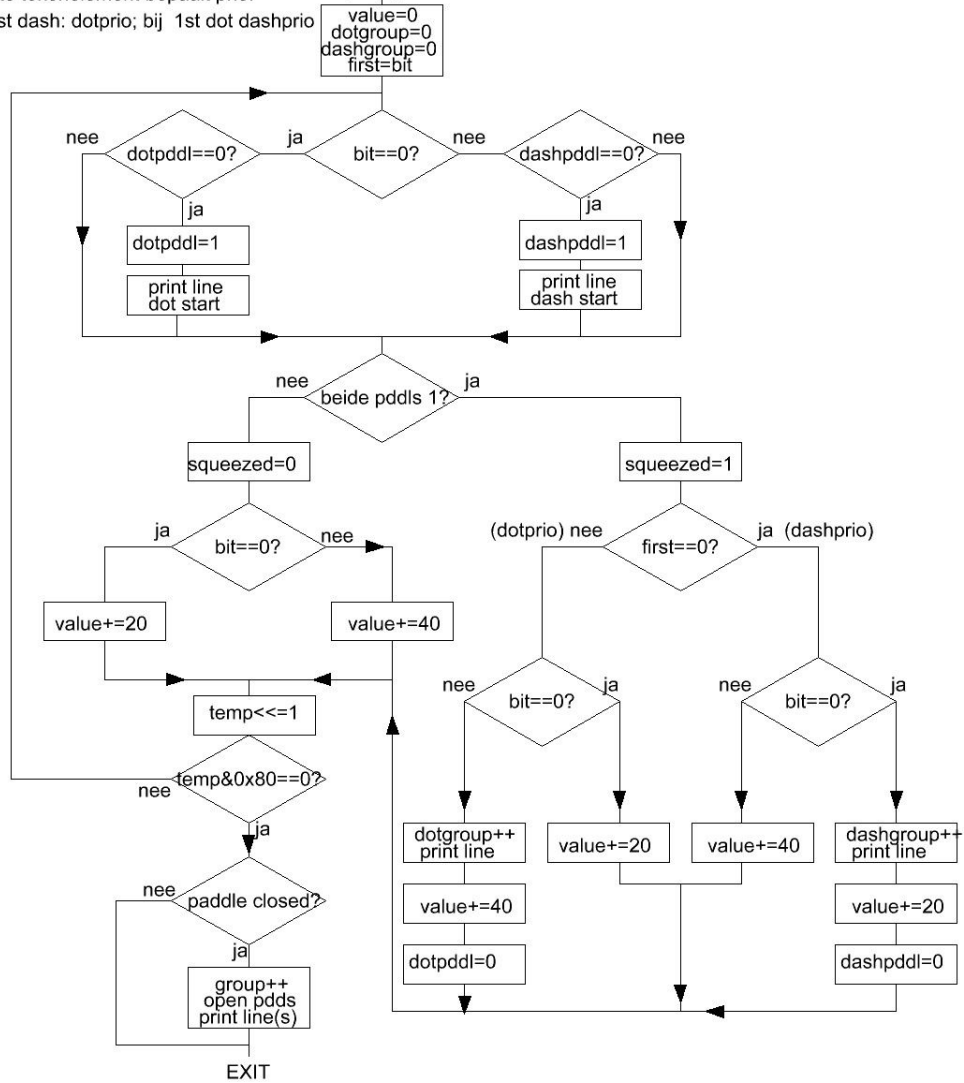
Dash Priority Mode

routine die dotopen/close en dash open/close bepaalt in C
Dit priority mode



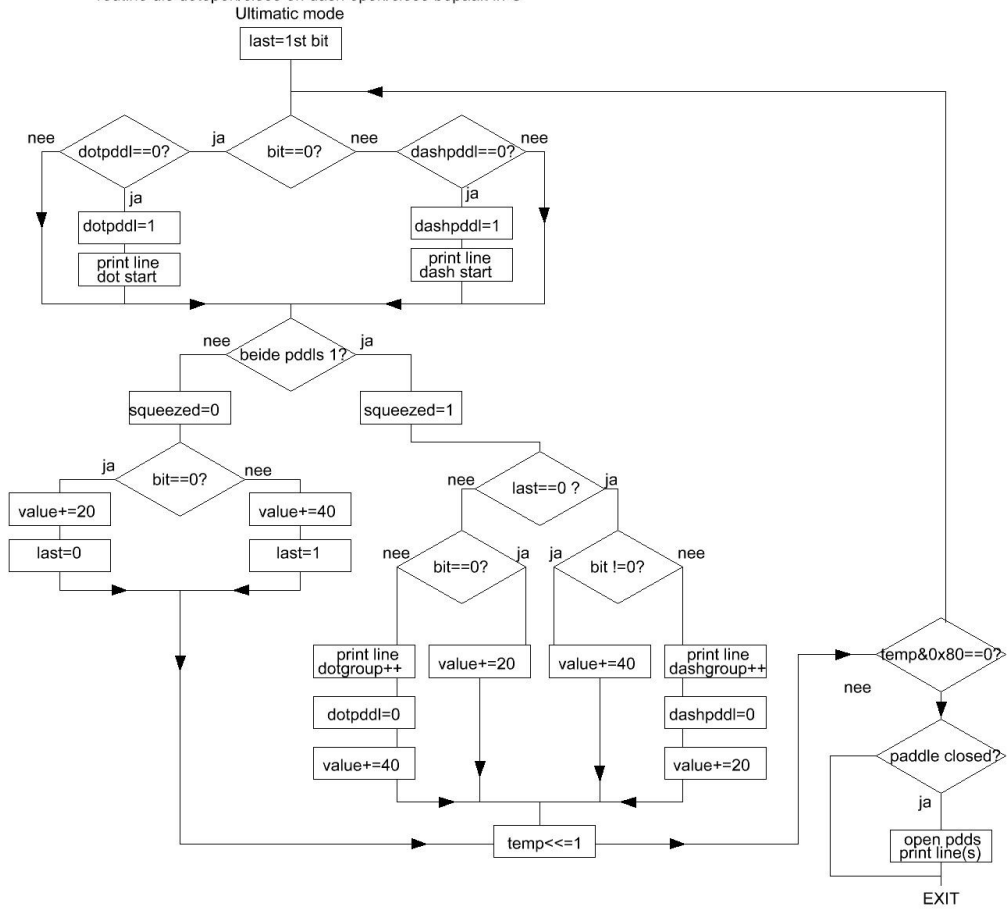
Dot priority Mode

routine die dotopen/close en dash open/close bepaalt in C
 eerste tekenelement bepaalt prio. Alt priority mode
 bij 1st dash: dotprio; bij 1st dot dashprio



Alt Priority Mode

routine die dotopen/close en dash open/close bepaalt in C



Ultimatic Mode